

THE POWERTOME® *the extraction advantage™ for surgeons and patients.*

The Powertome® improves the tooth removal process for both surgeons and patients by providing greater control for the surgeon during extractions. The Powertome® is an automated periosteal elevator that offers extremely precise tooth extraction with minimal or no alveolar bone loss. The surgery is often flapless so patients experience reduced pain and swelling. This translates into less chair time and faster recovery for the patient. The Powertome® is UL-60601 certified.

What is it?

- Powered Periosteal Elevator
- Blade shaped tip
- Intrinsically safe
- Taps on down stroke only
- Severs periodontal ligament fibers
- Slightly expands socket

Advantages:

- Surgery can be flapless
- Faster than manual periosteal elevators
- Minimal alveolar bone loss
- Less risk of fracturing lingual or buccal plate
- Reduced pain and swelling for patient

Indications for Use:

- Trauma
- Severe caries
- Pathology
- Periodontal disease
- Malformed teeth
- Orthodontic indications
- Immediate implant placement
- Pre-implant placement
- Pre-prosthetic

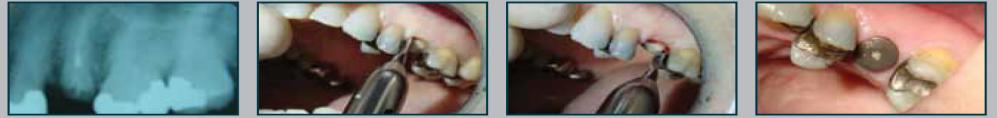
Features:

- Replaceable periosteal tips
- Fully autoclavable handpiece and tips
- Quick release allows rapid tip replacement
- UL-60601 certified for hospital use

POWERTOME® 100S CASE STUDIES



Root Dilaceration



This was a sub-crestal root tip that would have been very difficult or time consuming to remove with traditional methods. The implant was intentionally placed with a gap that was beautifully filled within three weeks as the last picture shows.



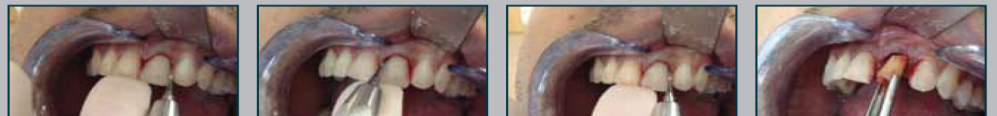
Routine Premolar Extraction



This case had a very thin buccal plate that was preserved using the Powertome® for the extraction. An envelope flap was reflected after the extraction to inspect the buccal plate. The surgery was done flapless.



Maxillary Incisor



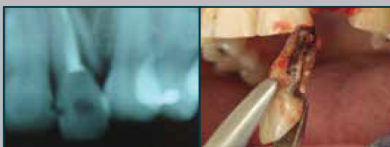
This case illustrates a flapless removal of a root tip performed with the Powertome®. The extraction was completed with minimal trauma.



Crowded Teeth



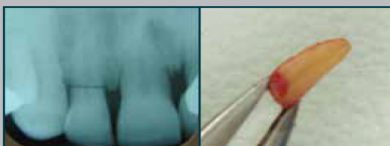
Tooth was removed prior to orthodontic treatment. This would have been a difficult extraction using forceps alone due to the crowding. By expanding the socket with the Powertome®, the tooth could be removed easily with forceps.



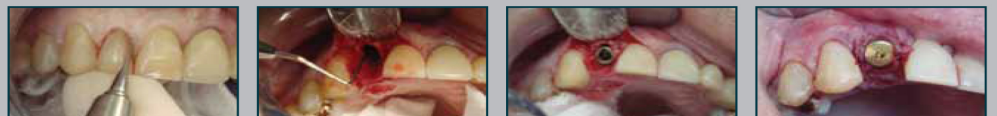
Vertically Fractured Tooth



This would have been a difficult extraction without the Powertome® due to the vertical fracture. The extraction was done flapless with minimal trauma.



Immediate Implant Placement



This tooth was horizontally fractured. The root tip was removed atraumatically and the buccal and crestal bone were well preserved as shown when the post operative flap was reflected.